

# Welcome to Fountaindale School

What do you remember about school?



**Fountaindale**  
A SPECIAL SCHOOL



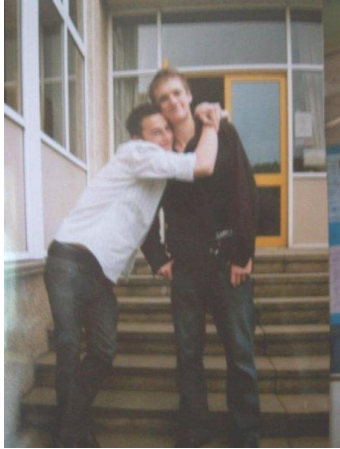
**“Belong... Engage...  
Enjoy”**



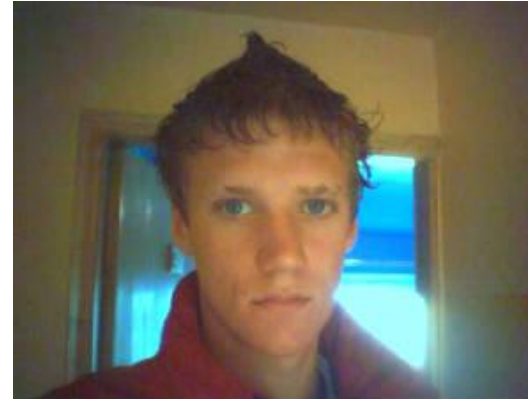
**nexus**  
Multi Academy Trust

**unicef**  
UNITED KINGDOM  
SILVER – RIGHTS AWARE

# What I remember about school...



**Mr Yates PE Lessons 😊**



**Mrs Bennetts Science Lessons 😞**



# What I remember about teaching...



**“When we think back on school, we don’t remember worksheets - we remember people, moments and belonging.”**



# A Brief Introduction to Me:

- **Deputy Principal** - Dawn House School (*Outstanding SEN*)
- **Assistant Head** - Swanwick School and Sports College (*Outstanding SEN*)
- **Mainstream-trained teacher and Head of Year** - Computing and PE, St Mary's Catholic High (*Outstanding Mainstream*)
- **Computer Science graduate** - University of Huddersfield (2:1)
- **Experience of governance** – Member of the Dawn House School SAB (School Advisory Board) and Parent Governor at Abercrombie Primary School 2024-2025

**“SEN Education for me is inclusive and child-centred - built on high expectations, strong relationships and meaningful opportunities that create moments that matter and memories that last.”**



# What Makes This School Special...

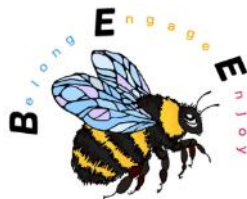
- The pupils
- Caring and passionate staff
- Talented group of teachers full of ideas
- Strong relationships between staff and pupils
- The environment and space
- Use of Seesaw to communicate
- Appropriate pathways that suit the needs to pupils
- Celebrating successes



# My First Four Weeks...

- Visiting classrooms
- Talking to pupils
- Visible leadership
- Listening to parents and helping you stay informed
- Seeing learning in action
- Completing training - manual handling and DSL
- Engaging with local authority
- Upskilling

## Identifying next steps for the school



# Next Steps - September Ready:

1. Develop a Secure Understanding of the School's Context and Provision
2. Strengthen Leadership Clarity within the Senior Leadership Team
3. Establish Robust and Consistent Quality Assurance Systems
4. Promote Confidence in Extending Learning Beyond the Classroom
5. Strengthen Communication with Parents and Carers
6. Robust and Effective Behaviour Tracking and Provision Systems



# Next Steps - September Ready:

- Excellent teaching and learning
- High expectations for all children
- Strong behaviour and belonging
- Wider opportunities and enrichment (*Forest Schools, Samba Sports, Portland*)
- Communication and partnership with families



# Why Community Relations Matter:

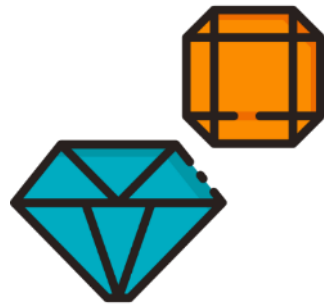
- A school as a community is more than simply a place of education
- It is a constant, trusted presence within the lives of children, families, and the wider community
- Good community relations:
  - ✓ Give families confidence in care and decision-making
  - ✓ Build staff and family engagement



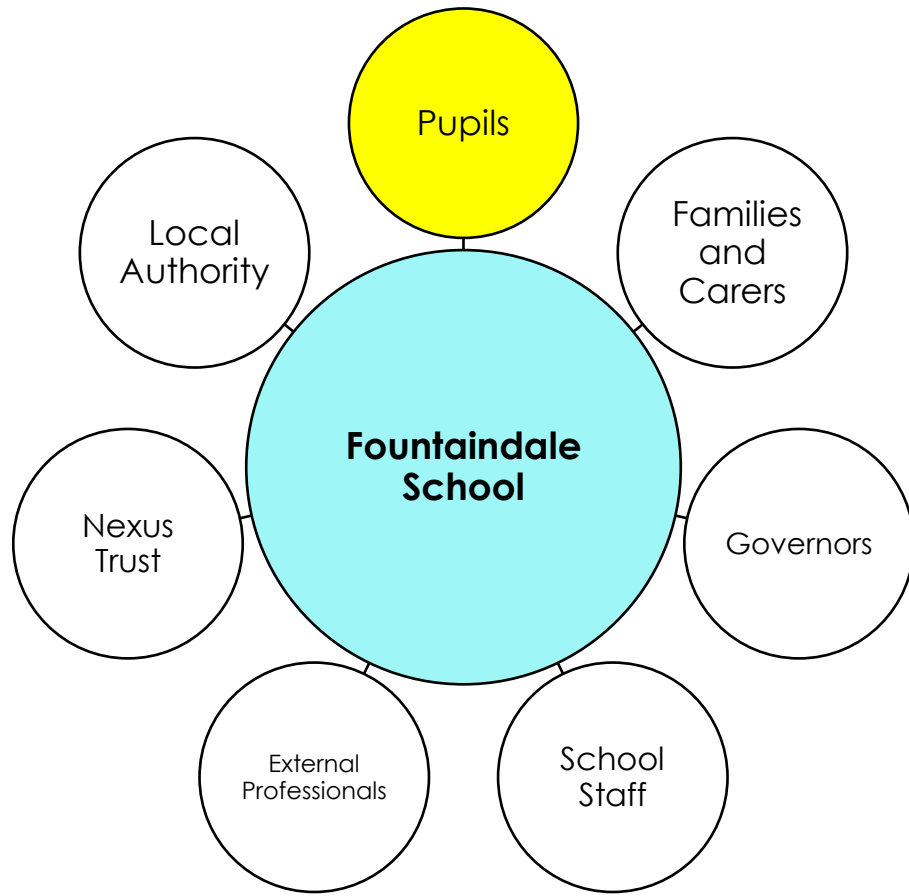
# Why Community Relations Matter:

For families at Fountainsdale, the school must be seen as:

- A place of safety and reassurance
- A space where children are known, valued, and understood
- A point of stability when other services may change
- A place where their children are safe, respected and well cared for



# When we Talk About Community...



**An effective school community is sustained when we work together with all stakeholders to maintain trust and shared purpose.**

**I have to listen to all these voices...and sometimes it is impossible to please all.**



# Strong Community Relations - Families:

## Ensuring Families and Carers are at the heart:

- Families feel listened to, respected and valued
- High levels of trust in:
  - ✓ Safeguarding
  - ✓ Care
  - ✓ Professional judgement
- Parents feel confident approaching the school with concerns
- Families describe the school as a partner, not just a provider
- Parents would recommend the school to others
- Proactive rather than reactive communication



# Strong Community Relations - Pupils:

## Pupil experience ensures:

- Known and valued as individuals
- Treated with dignity
- Supported towards ambitious, meaningful outcomes
- Medical, sensory, emotional and communication needs met
- Needs met safely and sensitively
- Supported by skilled, consistent staff
- Given rich experiences that create moments that matter
- Celebrated
- Pupil Voice



# What Stakeholders Will Receive From Me...

- Transparent - no surprises
- Actions linked to long-term priorities
- Evidence-informed decision-making
- The school's best interests come first
- Openness to challenge
- Visible leadership and presence
- Accountability and making difficult decisions when necessary
- Focus on impact and continuous improvement

visible  
impact  
improvement challenge  
accountability priorities  
evidence-informed  
transparent



# What I Ask From Parents/Carers:

- Support attendance
- Respectful communication
- Support routines
- Work in partnership
- An understanding we are only human



# What Pupils Deserve:

- To feel safe
- To feel known
- To feel challenged
- To feel included
- Opportunities beyond the classroom
- Adults who believe in them



**These pupils deserve the very best**



# Key Points and Summary:

- At Fountainsdale, leadership is about more than systems and structures - it is about people, trust and lived experience.
- My commitment as Headteacher is to:
  - ✓ Keep pupil experience at the heart of every decision
  - ✓ Lead with visibility, consistency and credibility
  - ✓ Work in partnership with families, staff and governors
  - ✓ Safeguard Fountainsdale's values, ethos and reputation

**When trust is strong, communities thrive - and when communities thrive, children flourish.  
Belong... Engage... Enjoy**



# Thank you



**Fountaindale**  
A SPECIAL SCHOOL

## Any Questions?

**“Every child deserves a school where they are known, safe and valued.”**